

**SUBU**  
Students' Union  
Bournemouth University

# Advertising Opportunities

Marketing Media Pack  
Academic year 2025 - 2026

**BU** Bournemouth  
University





# Contents



Why are students so important to you?	3
Freshers Fair	4
Arrivals Key Marketing	5
Digital Activations	6
Digital Package Deals	7
Student Discount App	8
Student Offers & Events Magazine	9
Posters	10
Leaflets and Vinyls	11
In-Person Activations	12
Experiential Marketing at Key Events	13
Event and Campaign Partnerships	14
Nerve Student Media	16
Sponsor a Club or Society	17
Popular Marketing Packages	18
Testimonials	19

# Academic year 2025 - 2026

## Key dates for students

### September

- Sat 20/Sun 21: **Move-In Weekend**
- Sun 21: **BU Street Fair (Holdenhurst Road)**
- Mon 22: **Term 1 Starts**
- Mon 22: **Student Loan Payment**
- Mon 22-Fri 26: **Arrivals Week**
- Sat 27: **Freshers Fair** (see p4)

### December

- Tue 2: **Christmas Fair**
- Fri 19: **Term 1 Ends**
- Mon 22: **Winter Break Starts**

### March

- Women's History Month**
- Tue 10-Thu 12 (TBC): **Spring Jobs Fair**
- (Talbot Campus)
- Fri 27: **Term 2 Ends**
- Mon 30: **Spring Break Starts**

### May

- Mon 4: **The Big Give Launch**
- Wed 6: **SportBU Blues vs Yellows** (multi-sport tournament - see p11 & 12)
- Mon 18-Fri 29: **Exam Period**
- Date TBC: **SUBU Awards**
- Sat 30: **Summer Ball** (see p11 & 13)

## Events you can get involved with

### October

- Black History Month**
- Wed 1: **Part-time Jobs Fair (Student Centre, Talbot Campus)**
- Tue 21-Thu 23: **Annual Careers Fair (Student Centre, Talbot Campus)**

### January

- Fri 9: **Winter Break Ends**
- Mon 12: **Term 2 Starts**
- Mon 12: **Student Loan Payment**

### April

- Arab, Asian & Ethnic Minority History Month**
- Sun 19: **Spring Break Ends**
- Mon 20: **Term 3 Starts**
- Mon 20: **Student Loan Payment**

### June

- Fri 26: **Term 3 and Undergraduate Year Ends**

## Term and holiday dates

### November

- Disability History Month**
- Mon 3-Fri 7: **BU Graduation Ceremonies (BIC)**
- Tue 18-Wed 19: **Nursing, Health & Social Care Careers Fair (BGB, Lansdowne Campus)**

### February

- LGBTQ+ History Month**
- Tues 3: **Refreshers' Fair**
- National Volunteering Fair**



# Why are students so important to you?

## Why advertise with us?

The Students' Union at Bournemouth University (SUBU) is the best place to help you start a conversation with over 16,000 students!

Many of our students are moving away from home for the first time and are deciding which brands best suit their needs. This presents the perfect opportunity to showcase your brand and create long-term brand loyalty with this highly sought after demographic.

SUBU is affiliated with Bournemouth University, giving us exclusivity to allow clients to market to BU students. We are a brand that BU students acknowledge and trust, we have an in depth understanding of our student population and will work with you to fine tune your messages.

**Brand Loyalty** After the first 3 months, students' start to form habits and build brand loyalty.

**Early Adopters** Students are generally early adopters, experiencing a milestone in their life and a taste of independence.

**Community Environment** The nature of the University community allows for relationships between brands and students to take hold faster.

**Giving Back** SUBU is a non-profit charity, so any profit generated from marketing and sponsorship goes back into our day-to-day work supporting students to succeed.

## National Spending Figures



**£23 Billion**  
Annually



**£2 Billion**  
Socialising



**£3.5 Billion**  
On food



## Bournemouth Spending Figures

Bournemouth University students alone spend over £125 million annually.



**£58 Million**  
On accommodation



**£28 Million**  
On food & drink



**£15 Million**  
On recreation



**£10 Million**  
On transport



# FRESHERS FAIR

**Saturday 27 September 2025**

SUBU's Freshers' Fair is a huge exhibition that is free to attend for over 16,000 Bournemouth University and Arts University Bournemouth students. Included in the fair are all SUBU's clubs and societies, BU sports teams, local and national businesses, live entertainment, sports demos, music, food and drink! It's officially one of the biggest and best Freshers' Fairs in the country, with over 7,000 students visiting the event each year!

**We welcome vehicles and bespoke stand sizes on request. No stand too big!**



*Brands we've regularly hosted*

PLATINUM		GOLD	
WiFi	FREE	WiFi	FREE
Power	FREE	Power	FREE
Premium Indoor Spot 4m x 1m Table	£1,250	Indoor Spot 2m x 1m Table	£900
SILVER		BRONZE*	
WiFi	FREE	WiFi	FREE
Power	£50	Power	FREE
Outdoor Boulevard 3m x 3m Gazebo*	£750	Indoor Spot 2m x 1m Table	£250

\*Gazebo provided

\*Only available for charity and non-profit organisations.





# Arrivals key marketing



£250

## STUDENT WELCOME MAP

A detailed double-sided map of Bournemouth town centre, Lansdowne and Talbot Campus, illustrating key landmarks and venues. Maps are widely available in halls and university buildings across arrivals weekend.

5000 maps printed,  
advert dimensions 80x50mm.

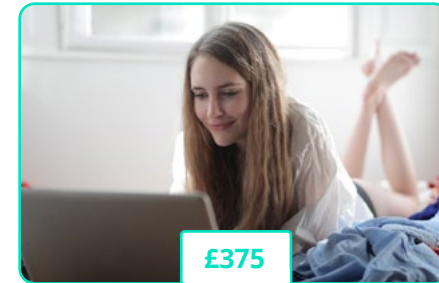


£250

## STUDENT OFFERS & EVENTS MAGAZINE

2,700, A5 sized, 16 Page booklets distributed across 11 halls of residence to 6,000 student post boxes in Lansdowne area, and via 12 distribution points across campus. Full Page A5 Portrait (148mm x 210mm).

See all distribution dates on page 9.



£375

## PRE-ARRIVALS EMAIL

Part of the first commercial email BU students receive the weekend they move to Bournemouth. The Pre-Arrivals Email has a reach of over 14,000 students registered to receive, including the complete up-to-date list of 5,000 new students to BU.

### Package deals

#### GOLD

Gold Freshers Fair Stand

WORTH  
£900

Pre-Arrivals Email

WORTH  
£375

Student Welcome Map

WORTH  
£250

Student Offers & Events Magazine

WORTH  
£250

20% Discount (£355)

£1,420

#### SILVER

Pre-Arrivals Email

WORTH  
£375

Student Welcome Map

WORTH  
£250

Student Offers & Events Magazine

WORTH  
£250

15% Discount (£131.25)

£743.75

#### BRONZE

Student Welcome Map

WORTH  
£250

Student Offers & Events Magazine

WORTH  
£250

10% Discount (£50)

£450



susales@bournemouth.ac.uk



01202 961 461



subu.org.uk/Marketing

5

# Digital Activations

Cost-effective digital marketing options: direct, quick and trackable allowing direct crossover onto your media channels.



## DIGITAL SCREENS

We have 9 landscape screens, showing 6 slides for 10 seconds each in key locations, receiving over 4,000 views a day: 1 x 65" Poole House Atrium, 2 x 55" SU Shop tills\*, 1 x 55" Ground Up Cafe\* (facing busy queue) and 5 x 55" across the Student Centre. If artwork contains a QR code, it must also display the URL.

9 screens = £400 p/m

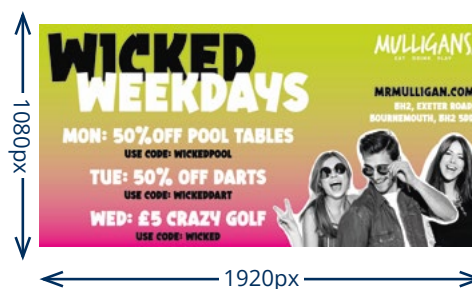
2 screens = £200 p/m



## STUDENT EMAIL (SOLUS)

Have your email campaign delivered directly to an audience of over 14,000 students.

£375 per send



## STUDENT EMAIL (TRIPLE)

Be one of three organisations featured in an email to over 14,000 students.

£175 per send



## STUDENT EMAIL ADVERT

Have a leader board advert for your campaign featured as part of the weekly email that students rely on to find out about news and events.

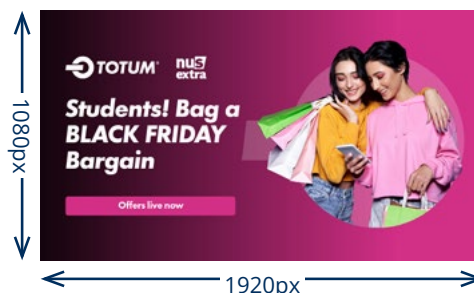
£175 per send



## WEB BANNER ADVERT

Feature your campaign on every page of the SUBU website, to an annual audience of over 1 million!

£350 per month



## HOMEPAGE CAROUSEL ADVERT

Your message can be delivered direct to all visitors to the SUBU homepage. This is limited to one advert per week so be sure to book in advance.

£400 per month



## FACEBOOK

## SOCIAL MEDIA POSTS

Reach students directly through the SUBU social media channels.

f 15,500

ig 11,100

td 20,200 likes, 1,349 follows

£65 per post

£200 for 4



## INSTAGRAM

# Digital Package Deals



## Event Sponsorship Package

**Advert on Ticket Page** (1 month)  
Landscape Slide 1920px x 1080px

WORTH  
**£400**

**Student Email Banner Advert**

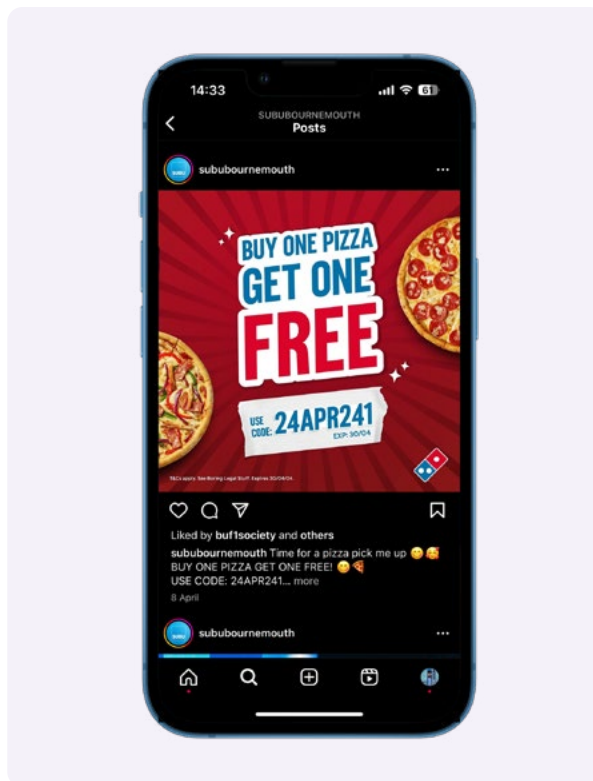
WORTH  
**£175**

**Web Banner Advert** (1 month)

WORTH  
**£350**

**15% Discount (£138.75)**

**£786.25**



## Social Media Package

**4 Social Media Posts**

**£260**



15,500 follows



11,100 follows



20,200 likes, 1,349 follows

**23% Discount (£60)**

**£200**



## Digital Campaign Package

**Student Email (Solus)**

WORTH  
**£375**

**Social Media Package**

WORTH  
**£200**

**9 Digital Screens** (1 month)

WORTH  
**£400**

**15% Discount (£146.25)**

**£828.75**



susales@bournemouth.ac.uk



01202 961 461



subu.org.uk/Marketing

# Student Discount App - powered by UniStreet

**Connect your brands offer and discounts direct to our 16,000 Bournemouth Students via our Official Student Discount App powered in partnership with UniStreet**

A gated platform exclusive to registered Bournemouth University members. Making your student campaigns more targeted and impactful than ever before.

## A Targeted Bournemouth SU Platform - Powered by UniStreet

Our students access our fully branded exclusive discounts platform through a gated community via their Bournemouth University Email.

## Connecting Brands with Students

Brands can promote offers, discounts and giveaways while building market presence through valuable data and insights, supported by UniStreet.

- **Customisable Profiles**
- **Real-Time Campaign Insights**
- **Targeted Engagement**

## Discounted Product and Services

Students can easily find discounts and offers from brands aiming to expand in the student market with Bournemouth SU seal of approval increasing brand trust.

## Creating an Inclusive Student Market

From multi-national to local, UniStreet enables brands to connect with UK students through local, national and custom advertising packages all with cost in mind.

### Basic

For brands who just want to target Bournemouth SU's 16,000+ students.

- **Unlimited Discounts and Offers**
- **Real-time Analytics and Metrics**
- **3rd Party Affiliate Links**
- **Manage Multiple Brands**
- **No CPC/CPI Costs**

**£49 per month / £500 per year**

### Premium

For national brands who want to appear to all students. All basic, plus:

- **Higher Search Placements**
- **Higher Placement Results**
- **Local Featured Offers**
- **Homepage Placement(s)**

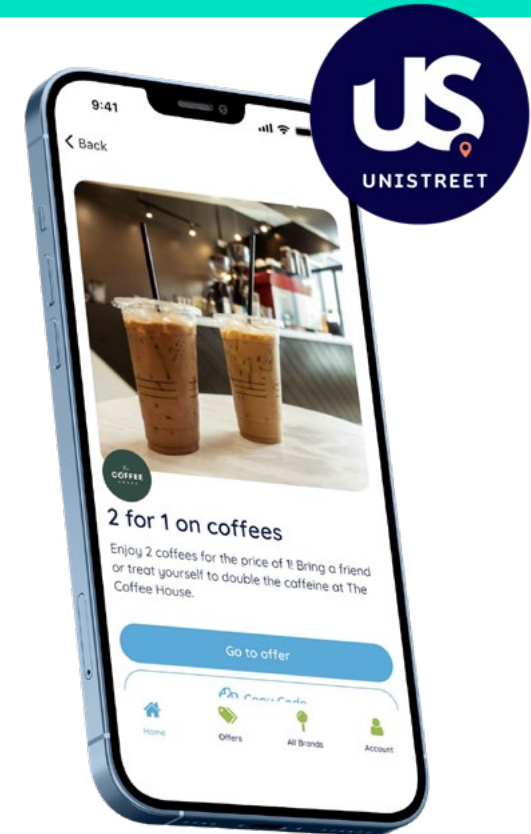
**£99 per month / £1,000 per year**

### Elite

For brands wanting to be prominent with the most eyes on them. All Premium, plus:

- **Featured Vendor**
- **Featured Offers**
- **Premium Search Visibility**
- **Homepage Placement(s)**
- **Local Main Category Banner Adverts**

**£199 per month / £2,000 per year**





# Student Offers & Events Magazine

## Student Offers & Events Magazine

SUBU Offers and Events Magazine - 2,700, A5 sized, 16 Page booklets distributed across 11 halls of residence to 6,000 student post boxes in Lansdowne area, and via 12 distribution points across campus.

Artwork Required 300dpi PDF or JPG. Email to [susales@bournemouth.ac.uk](mailto:susales@bournemouth.ac.uk)

### 2025 to 2026 Dates:

5 magazine distribution dates

- **Arrivals Sept/Oct Edition** - Fri 19 Sept
- **Nov Edition** - Fri 31 Oct
- **Feb Refreshers Edition** - Fri 30th Jan
- **March** - Fri 27 Feb
- **Spring Edition** - Fri 1 May

### Special additional publications:

- **Student Welcome Booklet** 4,000 copies - Distributed from 20 Sept, plus more printed to be distributed at BU open days.
- **Summer Ball Promotional Brochure** Minimum 2,000 printed, plus more printed as required. Distributed across campuses and halls through February - May.

**Full page A5 portrait**  
(148 x 210mm)

£250

**Half page landscape**  
(148 x 105mm)

£150

Deal

**7 x Issues per year**

£1,750

**15% Discount (£262.50)**

£1,487.50



# Posters

**SUBU has over 40 x A2 and 6 x A0 poster sites available for commercial clients across Talbot and Lansdowne Campuses. This traditional marketing is straight in students' eye-line, with valuable high-footfall locations.**

Bookings can be made all year round, but you only pay for the 35 teaching weeks. If your requested period includes a student break, you can extend your booking.



A2 Posters		A0 Posters		Six-sheet Posters	
1 Poster (1 week)	£25	1 Poster (1 week)	£40	1 Poster (1 week)	£50
1 Poster Print*	£5	1 Poster Print*	£10	1 Poster Print*	£20
1 Posters (1 month)	£400	1 Poster (1 month)	£160	1 Poster (1 month)	£200
4 Posters (35 weeks)	£3,500	1 Poster (35 weeks)	£1,400	1 Poster (35 weeks)	£1,750
Deal		Deal		Deal	
4 Poster (35 weeks)	£3,500	1 Poster (35 weeks)	£1,400	1 Poster (35 weeks)	£1,750
15% Discount (£525)	£2,975	15% Discount (£210)	£1,190	15% Discount (£263)	£1,487

\*all print requires 3mm bleed



# Leaflets and Vinyls

Traditional print marketing straight into the student's eye-line, with valuable high-footfall locations. Dylan's Kitchen & Bar is THE student hang-out on campus. Open 7 days per week, daytime and evening.

## Leaflet Distribution

### On Campus

Why not book a promotional table in the busy Poole House Atrium, with average footfall of 4,000 students per day. This is ideal for face-to-face promotion and if you want to distribute your leaflets on campus, you must book a table.

#### Promotional Table

£200

#### 2 Social Media Posts (£130 value)

FREE

Alternatively, you can book our Promo Team to promote your brand and distribute your leaflets.

#### Promo Team (per person/per hour)

£20

You can also display your leaflets on SUBU reception, a busy location at the heart of the Student Centre on Talbot Campus.



## Dylan's Bar & Kitchen Table Vinyls

Promote your brand in the popular Dylan's Bar with one of our limited slots for a vinyl across a table surface.



#### 1 Table (1 week)

£35

#### 1 Vinyl Print

£25

#### 5 Table Stickers (1 weeks)

£175

#### Deal

#### 5 Table Stickers (1 month)

£700

#### 5 x Printing: Regular price £125

FREE

#### Total

£700

# In-Person Activations

With an average daily footfall of 4,000 students, our promotional stands at key events or on campus are ideal for product sampling, leafleting, data capture, competition sign-ups, face-to-face interaction, informal interviews, brand awareness, product launch, research or testing - and more!

**WiFi** and **electric power** included **FREE** with all promotional stands. Plus all bookings will be promoted on our social media channels. This can take the form of a post, story or event listing depending on the activity and the campaign materials provided.

In this space, SUBU can accommodate a range of activities from large scale installations and branded vehicles to simpler or pop-up displays



Central Boulevard Stand

At the heart of Talbot Campus, directly outside the Students' Union and Bournemouth University's sports centre SportBU, we have a semi-circle along the Central Boulevard exhibition space.

In this space, SUBU can accommodate a range of activities from large scale installations and branded vehicles to simpler or pop-up displays.

**Promotional Table - Outdoor**  
3m x 3m (16 Amp Power Supplied on Request)

£300



Indoor Promo Stand

We offer exhibitor tables in the busy Poole House Atrium or on the Ground Floor of the Student Centre at Talbot Campus. Poole House is home to the university's main reception, Starbucks, the Union Shop, Dylan's Bar and is the main walkway between the bus stop and university lecture buildings and study spaces. With students travelling to and from lectures all day, this is an ideal location for brand activations.

**Promotional Table - Indoor**  
2m x 2m

£200

**Digital Screen - Student Centre**  
Add 100" Screen to your Table Booking

£50



## Experiential marketing at key events



### Refreshers Fair

Tuesday 3 February

SUBU's Refreshers' Fair is taking place on Tuesday 3 February 2026, from 10am to 3pm. An exciting exhibition with an average attendance of over 4,000 students.

Included in the event are local and national businesses with sports teams, clubs, societies and demonstrations offering free samples, discounts and other engagements.

#### Central Boulevard Stand

Outdoor - 3m x 5m

£350

#### Student Centre Stand

Indoor - 2m x 1m

£300

#### Non-Profit: Student Centre Stand

Indoor - 2m x 1m

£150



### Blues vs Yellows sports competition

Wednesday 6 May

Book your experiential marketing at the heart of this annual sports tournament.

The student event culminates in a day of competitions, activities in a festival style atmosphere at Bournemouth University's sports ground, Chapel Gate.

#### 3m x 3m Promotional Table

Student Centre departure lounge

£200

#### 6m x 6m Marketing Zone

Chapel Gate

£500



### SUBU Summer Ball

Saturday 30 May

The SUBU Summer Ball is far more of a one-day festival than a formal ball and has been a staple of the student calendar for over 30 years. It's the climax to the academic year and has an impact way beyond our postcode!

With an annual attendance of 4,000 students, the SUBU Summer Ball is the biggest event of its type in the country!

Tailored event marketing and Sponsor packages available. Contact Andy via [susales@bournemouth.ac.uk](mailto:susales@bournemouth.ac.uk).

#### 3m x 3m Marketing Zone

£499

## Event and Campaign Partnerships

### FRESHERS FAIR

**Saturday 27 September 2025**

SUBU's Freshers Fair is a huge exhibition that sees attendance of over 6,000 students. Included in the fair are all SUBU's clubs and societies, BU sports teams, local and national businesses, live entertainment, sports demos, music, food and drink! It's officially one of the biggest and best Freshers Fairs in the country, with over 6,000 students attending each year!

#### Sponsorship Package

- Platinum Stand
- Logo on all Freshers Fair Marketing Materials
- Leaflet in Dig In Bag and Logo on Outside
- Headline 'In Association With' Sponsor
- Feature on SUBU Freshers Fair Webpage
- Pre-Arrivals Email to over 14,000 Students
- Entrance Banner and Flags at the Fair

**Only 1 Headline Sponsor**

**£4,999**



**May 2026**

The SUBU Awards is a night of celebration of BU students' achievements. SUBU Awards is a platform to recognise the fantastic work undertaken by our students.

The awards are an opportunity to reflect on the year, showcase student talent and most importantly celebrate student success, whether that's sustainability heroes, course reps, an amazing society or just a dedicated individual who embodies SUBU values to honour. It's our way of saying thank you.

#### Sponsorship Package

- 2 VIP Invitations to the event
- Logo on all SUBU Awards Marketing Materials
- Media Coverage from SUBU and Nerve Media
- Logo on Awards Presentation Screen
- Opportunity to Meet SUBU/BU Stakeholders

**Only 4 Partner Sponsors**

**£1,000**



**May 2026**

Book your experiential marketing at the heart of this annual sports tournament.

The student event culminates in a day of competitions, activities in a festival style atmosphere at Bournemouth University's sports ground, Chapel Gate.

#### Marketing Package

- Experiential Marketing Zone
- Social Media and Email Campaigns
- Digital Screen Adverts

**Event Marketing Package**

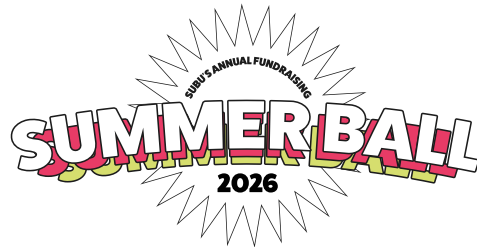
**£1,600**

**Experiential Marketing Area 6m x**

**£500**



# Event and Campaign Partnerships



**Saturday 30 May 2026**

The SUBU Summer Ball is more like a one-day festival than a formal ball and has been a highlight of the student calendar for over 25 years. It's the climax to the academic year and has an impact way beyond our postcode!

With an annual attendance of 4,000 students, the SUBU Summer Ball is the biggest event of its type in the country!

The official video and survivors' photo are among SUBU's most popular social posts.

## Sponsorship Package

- Headline 'In Association With' Sponsor
- Social Media and Email Campaigns
- Digital Screen Adverts
- Logo on all Summer Ball Marketing Materials
- Logo on Main Stage's Screen
- Entrance Banner and Flags at Summer Ball

**Partner Sponsor**

**£5,000**

**Experiential Marketing Zone 3m x 6m**

**£499**

## HIRE A SUBU VENUE



**Various Dates Available**

The Old Fire Station - SUBU's night-time venue - features 3 dance floors, 4 bars, 2 DJ booths, a stage, and plenty of hidden corners.

Book VIP tables for Comedy Nights or Lollipop Fridays. Hire spaces for course socials, birthday or halls parties - from 25 to 1,200 guests. Full stage, sound and lighting available, plus catering on request. Also hosts vintage and record fairs.

For more info or to book email us at [info@oldfirestation.co.uk](mailto:info@oldfirestation.co.uk)

## Free Event Marketing Included

- Halls of residence leaflet distribution
- A2 & A0 Posters across campus and venue
- Social Media and Email Campaigns
- Digital Screen Adverts
- 2m x 1m Promotional Stand on campus
- Listing on SUBU weekly E-news letter
- SUBU 'What's On' listing and Facebook event

**Tailored Prices On Request**

**£££**



**Various Dates Available**

Dylan's on Campus Kitchen and Bar is open all day, everyday. Hot food made to order in its own kitchen (pizzas and burgers especially good), fresh ground coffee and a great range of beer and lagers at prices you cannot beat.

Dylan's Kitchen & Bar has many options to hire out parts or all of the venue for parties, events, see the form Hire Enquiry form below.

For more info or to book visit website [www.dylansbars.co.uk/bookings](http://www.dylansbars.co.uk/bookings)

## Free Event Marketing Included

- Halls of residence leaflet distribution
- A2 & A0 Posters across campus and venue
- Social Media and Email Campaigns
- Digital Screen Adverts
- 2m x 1m Promotional Stand on campus
- Listing on SUBU weekly E-news letter
- SUBU 'What's On' listing and Facebook event

**Tailored Prices On Request**

**£££**

# Nerve Student Media

Nerve Media is run entirely by student volunteers, with hundreds of members across online journalism, radio, video and in print reaching tens of thousands of people in the local area and beyond, making them an exciting partner for your business.



## Prizes

Supplying prizes to be given away by any of the student media groups is a perfect solution if you have limited budget for advertising.

We welcome prize donations of any type; your company name will be featured in Nerve Media's core output and across social channels.

## Nerve radio



Broadcasting to the student body 24 hours a day, with 13 hours of scheduled talk shows and presenters per day, Nerve Radio are BU's voice and listening experience.

Over 250 students regularly dedicate their free time to producing high quality radio, recognised with national awards from bodies such as the Student Radio Association. Many members have gone on to work at organisations like BBC Radio 1 and 1Xtra, Heart Radio and talkSPORT.

Nerve Radio is traditionally broadcast on FM for one week a year - the next period will be in Spring 2026. This is a highlight of the calendar and a great chance to promote your brand.

All advertising and sponsorship opportunities listed are for the FM period only but we are happy to create custom packages throughout the year.

### Spot Advert (30 seconds)

£210

6 spots per day for 7 days - once an hour from 10.20am to 4.20pm.

### Breakfast Sponsorship Message

£200

The Nerve Breakfast Show airs from 8-10am on weekdays, with your message being broadcast at the start and end of the show, and twice more during it. This gives a total of 4 plays per day for 10 days, with no other adverts during the show.

### Drivetime Sponsorship Message

£200

The Nerve Drivetime Show airs from 4-6pm on weekdays, with your message being broadcast at the start and end of the show, and twice more during it. This gives a total of 4 plays per day for 10 days, with no other adverts during the afternoon show.

## Deal

### All Adverts & Sponsorship Messages\*

£860

\*During the FM Period

### 20% Discount (£172)

£688



# Sponsor a club or society

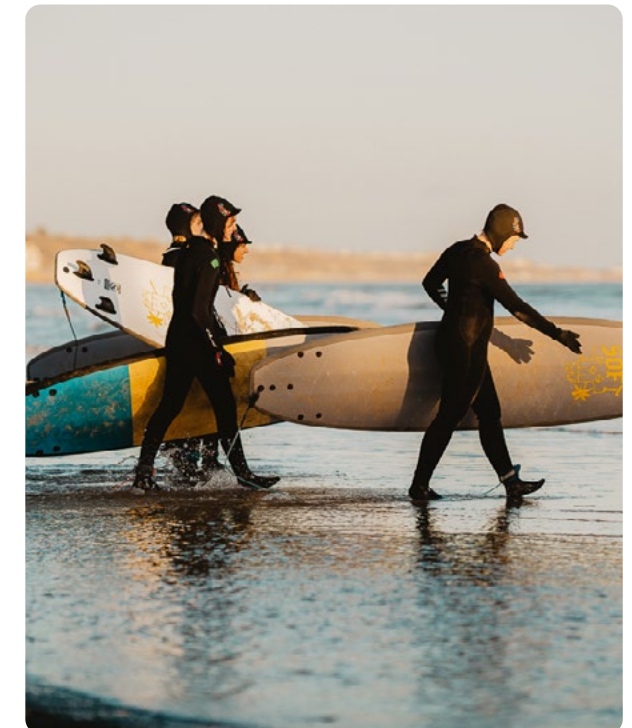
Sponsorship proposal for these clubs available on request. We have new clubs starting all year round so for the full list head to [www.subu.org.uk/clubs](http://www.subu.org.uk/clubs)



Any sponsorship agreements would be made only at the consent of the SUBU Club or Society key representatives.

Sponsorship revenue gained goes directly to help the club or society support its function.

Additional funds help develop the group, their equipment and enter more competitions.



On average, we have over 80 clubs and societies looking for sponsorship, offering a great way for your brand to directly associate itself with the strong identity, goodwill and success of the individual clubs and societies within SUBU, Bournemouth University and the community.

A detailed tailored sponsorship proposal is available on request, for the SUBU Clubs and Societies listed on [www.subu.org.uk/clubs](http://www.subu.org.uk/clubs). This will give you more information about the reasonable expenses clubs incur, the proposed sponsorship fee and the marketing exposure you can expect to receive. You can request them by emailing [susales@bournemouth.ac.uk](mailto:susales@bournemouth.ac.uk).

## Included in all Sponsorships

Logo on clothing

Hyperlinked logo on club page

Social media coverage on club page

2 x Student Email (Solus)

£750

4 x SUBU Social Media Posts

£200

2 x Promotional Table - Indoors  
2m x 1m

£400

[subu.org.uk/Sponsorship](http://subu.org.uk/Sponsorship)

Total Face Value

£1,350

# Popular Marketing Packages



## The Full Marketing Package

Freshers' Fair Gold Exhibitor Stand	WORTH £900
Pre-Arrivals Student Email	WORTH £375
Student Welcome Map	WORTH £250
4 Social Media Posts	WORTH £200
9 Digital Screens (1 month)	WORTH £400
4 x A2 Posters (1 month)	WORTH £400
Student Offers & Events Magazine	WORTH £250

20% Discount (£555)

£2,220

## Arrivals package

Freshers' Fair Gold Exhibitor Stand	WORTH £900
Pre-Arrivals Student Email	WORTH £375
Student Welcome Map	WORTH £250
Student Offers & Events Magazine	WORTH £250

15% Discount (£266.25)

£1,508.75

## Digital Package

Student Email (Solus)	WORTH £375
4 Social Media Posts	WORTH £200
9 Digital Screens (1 month)	WORTH £400

10% Discount (£97.50)

£877.50



## Testimonials

Don't just take our word for it!



**BAM AGENCY LTD**

Tim Bodenham  
Managing Director

SUBU is a fantastic platform for clients who want to target the student market. Our job at BAM is to find the best route to market for our clients that will deliver the best results and SUBU is one of our preferred media suppliers. Their media reach is fantastic and always surpass our expectation and targets. We love working closely with SUBU and the team are an absolute pleasure to work with.



**CAMPUS GROUP**

Daisy Startup  
Account Manager

I have been very fortunate to have worked with the Students' Union at Bournemouth University on a number of brand activations. Every time they went above and beyond to accommodate us and maximise our presence on campus. I would highly recommend activating on their campus and being involved in their popular student events.



**UNIPRINT LTD**

Mark Ellison  
Director

We have been working with SUBU for many years and we have always tailored marketing packages to fit our business needs and matching that to the print demands of the student calendar. Andy is very easy to work with, effective at delivering campaigns and reviewing the results of our marketing channels. Hence we renew our marketing arrangement every year.

Just some of the brands we have had the pleasure of working with



**Andy Elsey**

SUBU Commercial Partnerships Manager

Students' Union at Bournemouth University,  
The Student Centre, Fern Barrow,  
Poole, Dorset, BH12 5BB

**SUBU**  
**Students' Union**  
Bournemouth University



[susales@bournemouth.ac.uk](mailto:susales@bournemouth.ac.uk)



01202 961 461



[subu.org.uk/Marketing](http://subu.org.uk/Marketing)

19



# Let us connect your brand to over 16,000 Bournemouth Students

**1 x STUDENT EMAIL (SOLUS)**  
Reach 15,000 registered emails

**£375**

**1 x Student Offers & Events Magazine**  
Reach 6,000 students across 12 halls

**£250**

**1 x PROMO TABLE ON CAMPUS**  
2 Metres by 2 Metres

**£200**

**9 x DIGITAL SCREENS ON CAMPUS**  
Key locations for 1 month

**£400**

**4 x FOUR SOCIAL MEDIA POSTS**  
Across SUBU Bournemouth channels

**£200**

~~£1,425~~ → **£1,140**

**20% OFF**  
Multi Channel  
Discount  
Saves £285

All prices in this Media Pack are correct at the time of printing and are subject to change. **All prices are subject to 20% VAT.**

**SUBU** Students' Union  
Bournemouth University

*Your personal package*

