



Representation at SUBU

Student Voice & Policy

Voice team



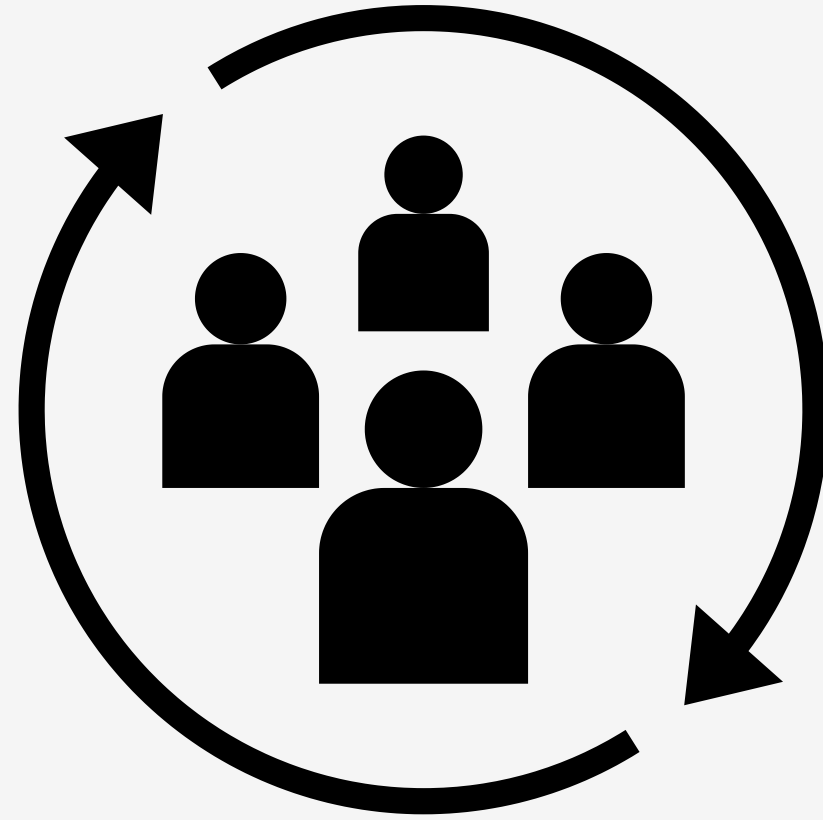
Ryan Hughes
*Student Voice
Coordinator*



Sarah Corder
*Student Voice &
Insight Manager*



Chris Millen
*Student Voice
Analyst*



Quick icebreaker

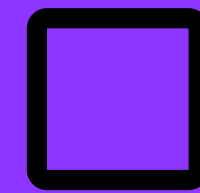
1

Split into pairs, ideally someone you don't normally study/work with.

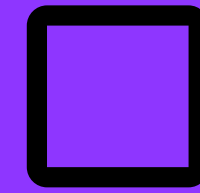
2

Talk to the other person about your passion outside of studies then report back to the group.

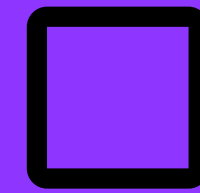
LEARNING OBJECTIVES



**Understand how
Representation works**



**Understand how to work
with Reps**



**Understand how your
society can facilitate change**



Our Student Reps

Student Reps are **volunteers elected** by their fellow students to **represent the Student Voice** for their programme.

They collect student feedback and represent it to BU staff, championing the student voice for their course. This means Reps have a **real impact** on resolving issues that matter the most to students.



We currently have 660 Student Reps.

80% of courses with 20 or more students have Representation.



my favourite part of being a Rep this year was

What's in it for **them**?



✓ Student Rep hoodie



✓ Rep coffee mornings



✓ End of year certificate



✓ Rep social events



✓ References for job applications

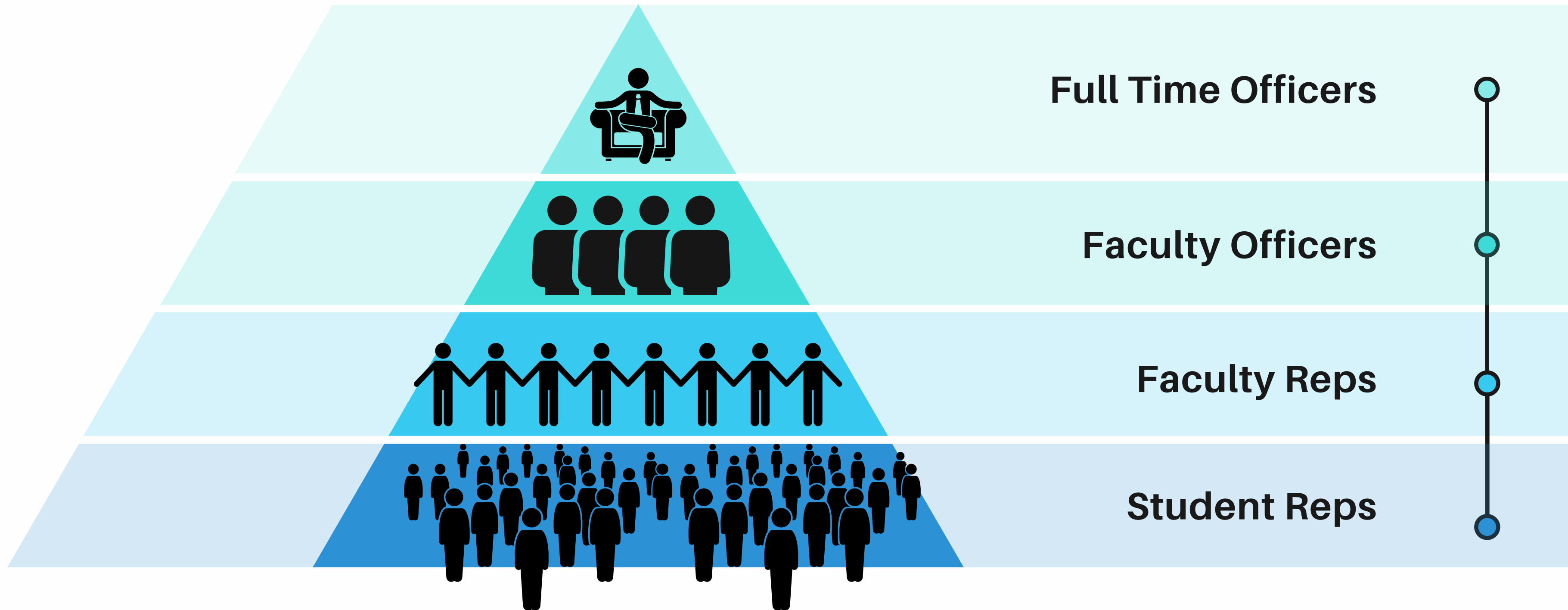
I don't want to be a Rep but...

How can you make the most out of Representation offer as a committee?

- Know who the Reps are on the course
- Know how to escalate issues to Course and Faculty Reps
- Encourage the use of SimOn
- Engage with your FTOs



Student Voice structure



YOUR FULL TIME OFFICERS



Esther Chineye Isaiah

SU President



**Grace Egbonna
Ehiosun**

SU VP Education



Jeffery Ononiwu

SU VP Student Opportunities



Fatima Farha

SU VP Welfare & Community

How they work

Student Reps follow a **three step process as part of their role**, this allows Reps to easily stay on track and verify if they are effectively achieving representation.



Collect

Reps collect feedback from the students on their course.



Represent

Reps attend a forum to share this feedback with BU staff.

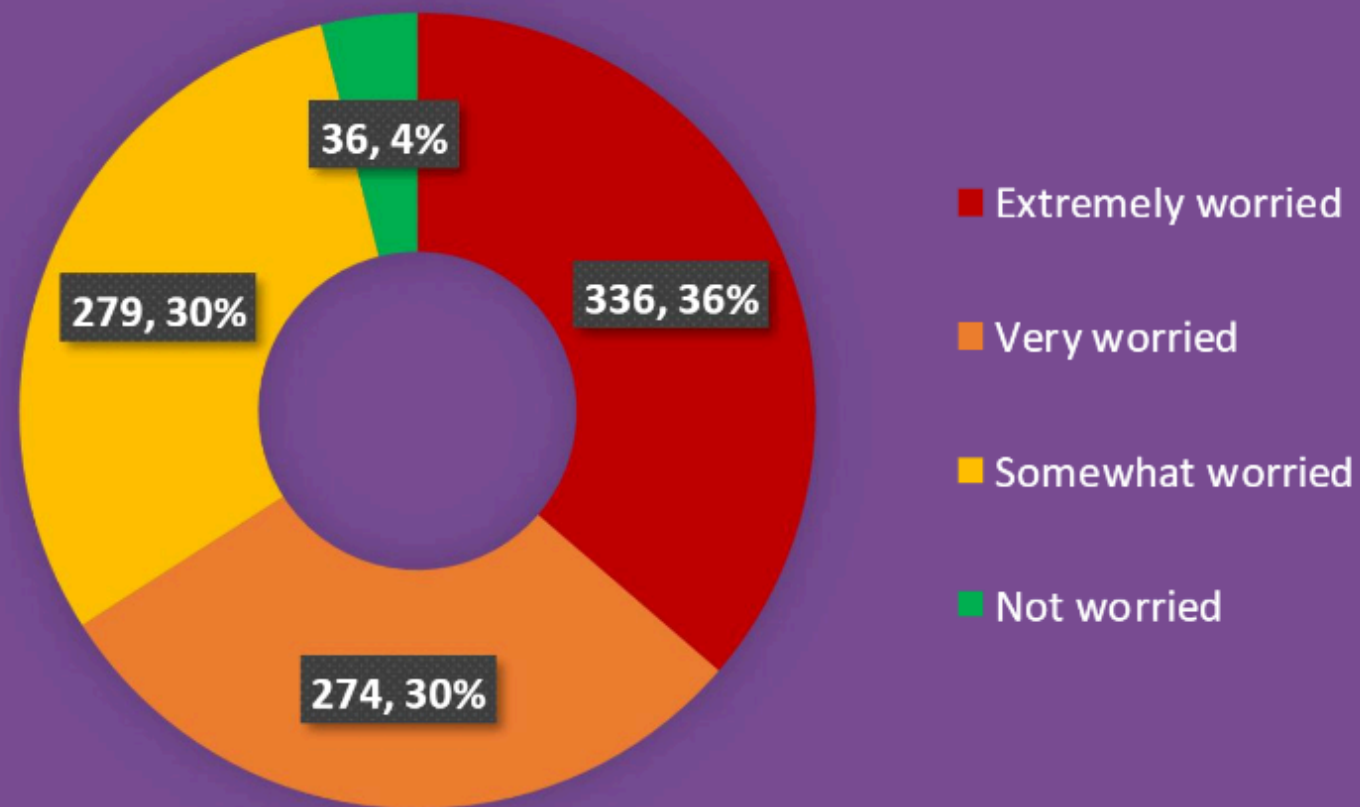
Share

Reps share any progress back to their coursemates.

Theme 2: COST OF LIVING

965
participants

Q6 How worried are you personally about the rising costs of living?



96% are **worried to some extent** about the cost of living, with **66%** being **Extremely** or **Very worried**

Year of study ($p=.011$) and **Student Origin** ($p=.023$) were significantly associated with how worried students were.

Foundation and final year students were the **most worried** about the rising cost of living, as were **International students**

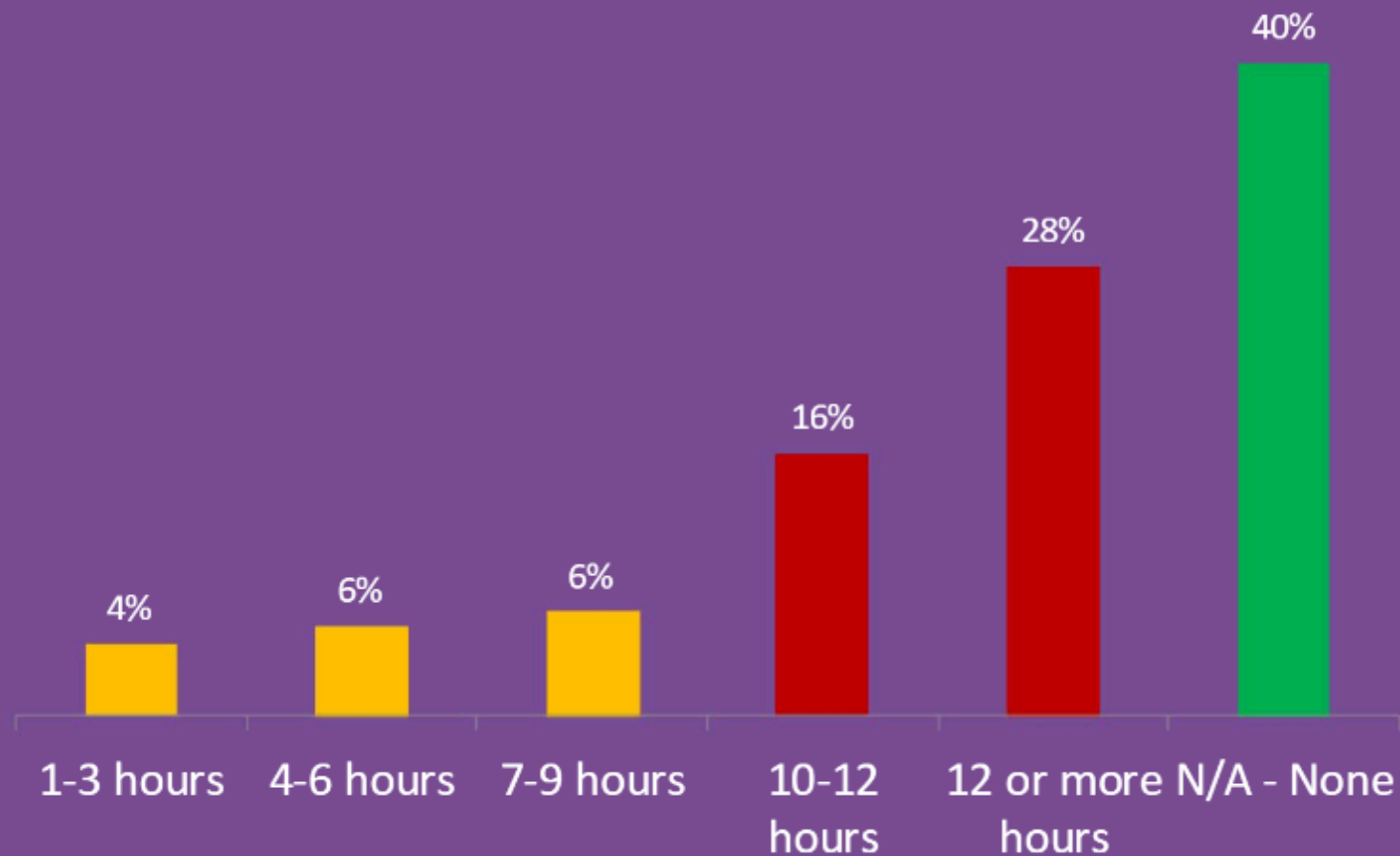
(Extremely or Very Worried: Foundation: 73.3%, Final Year: 73.8%; International: 72.4%)

Theme 2: COST OF LIVING

965
participants

Q8

If you do paid work during university term time, around how many hours do you do per week?



Part time paid work now a necessity for the majority of students

60%
of students
work part-
time

44%
work 10+
hours a week

28%
work 12+
hours a week



Campus Experience

Cost of living



Wellbeing/ mental health support



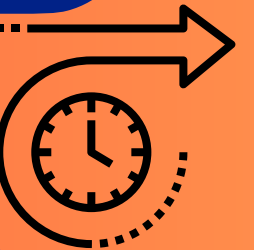
NOVEMBER

MARCH



Social life and engagement

My future



Usability and accessibility



**STUDENTS'
UNION**
BOURNEMOUTH UNIVERSITY

How's
SUBU?
for you

ENTER FOR YOUR CHANCE TO WIN EITHER...



x2

OR



£ 90



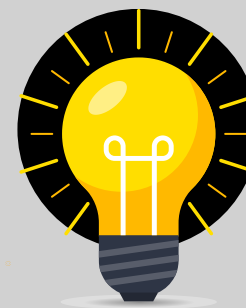
Works well



Needs work



New idea



Simon

is our Simple Online feedback tool,
empowering students to be able to have
their voices heard!



www.subu.org.uk/simon



SCENARIO

1

You're at a social and a member says...

They're finding a topic particularly hard and are worried about the end of year exam.

How can you use the Rep system to support them?

- Locate the course Rep (ask us, ask a lecturer)
- Put the student in contact with their Rep
- Direct them to SimOn
- Submit on SimOn yourself



SCENARIO

2



You're at a social and you overhear...

A group of media students agree the University do not have good enough equipment for their assignments and projects.

How can you use the Rep system to support them?

- Locate the Faculty Rep/ Officer (ask us, ask a lecturer)
- Put the student in contact with their Rep
- Direct them to SimOn
- Submit on SimOn yourself

SCENARIO

3

You're at a social and a member says...

Students in your society express concerns that the university's mental health support services are under-resourced or not widely known among students.

How can you use the Rep system to support them?

- Locate the course Rep (ask us, ask a lecturer)
- Put the student in contact with their Rep
- Contact/ put them in contact with an FTO
- Submit on SimOn yourself





01202 965771



reps@bournemouth.ac.uk



1st floor Students' Centre (Talbot)



[https://www.subu.org.uk/represented/
studentreps/simon/](https://www.subu.org.uk/represented/studentreps/simon/)

CONTACT US

